

SymbianGuru.com Your guru in mobile software.

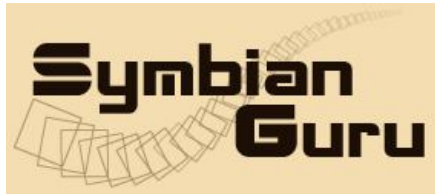
www.symbianguru.com

support@symbianguru.com

AutoProfiles v 3.2

by Symbianguru

User Manual



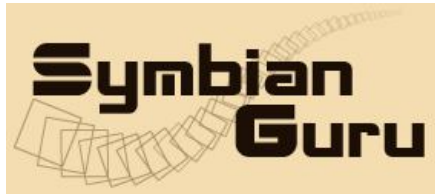
SymbianGuru.com Your guru in mobile software.

www.symbianguru.com

support@symbianguru.com

Index

Index.....	2
General description	3
How to register AutoProfiles	4
How to install AutoProfiles	4
Working with AutoProfiles	5
How to start	5
General information	5
Activate/Deactivate Function	5
Schedule	6
New Schedule	7
View details	9
Deactivate	9
Edit	10
Calendar.....	10
AutoProfiles Options.....	12
AutoProfiles Settings	12
How to uninstall AutoProfiles v 3.2	13
AutoProfiles Support.....	13



SymbianGuru.com Your guru in mobile software.

www.symbianguru.com

support@symbianguru.com

General description

AutoProfiles Software allows switching automatically (scheduler based) profiles according to one's schedule or calendar.

Version 3.2 AutoProfiles is compatible with **Series 60.3 and Series 60.5 Symbian** smart phones:

Nokia 3250	Nokia E75
Nokia 5320 Express Music	Nokia E90
Nokia 5500	Nokia N71
Nokia 5630 Xpress Music	Nokia N73
Nokia 5700	Nokia N73 Music Edition
Nokia 5730 Xpress Music	Nokia N75
Nokia 6120	Nokia N76
Nokia 6121	Nokia N77
Nokia 6110 Navigator	Nokia N78
Nokia 6210 Navigator	Nokia N79
Nokia 6220 Classic	Nokia N80
Nokia 6290	Nokia N81
Nokia 6650	Nokia N82
Nokia 6710 Navigator	Nokia N85
Nokia 6720 Classic	Nokia N86 8 MP
Nokia E50	Nokia N91
Nokia E51	Nokia N91 8GB
Nokia E55	Nokia N92
Nokia E60	Nokia N93
Nokia E61	Nokia N93i
Nokia E61i	Nokia N95
Nokia E62	Nokia N96
Nokia E63	Nokia 5800 Xpress Music
Nokia E65	Nokia N97
Nokia E66	Samsung SGH-i520
Nokia E70	Samsung SGH-i560
Nokia E71	LG JoY



SymbianGuru.com Your guru in mobile software.

www.symbianguru.com

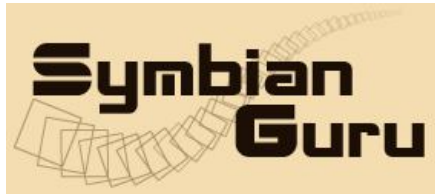
support@symbianguru.com

How to register AutoProfiles

The trial version of the software is limited for 10 days. The full version of the software is obtained by a license code provided upon purchase. The license code is based on the unique IMEI provided and the application can be used exclusively on the device it is licensed for. The license cannot be retrieved and applied to other devices.

How to install AutoProfiles

Please transfer the .SIS file to your mobile phone via Bluetooth, IRDA or Cable. After that follow the installation instructions on the mobile screen.



SymbianGuru.com Your guru in mobile software.

www.symbianguru.com

support@symbianguru.com

Working with AutoProfiles

How to start

AutoProfiles Application can be opened in following ways (depending on the phone):

- Clicking on the Menu button → AutoProfiles
- Clicking on the Menu button → My Own → AutoProfiles

Note! If there is a conflict on Auto start with AutoProfiles and some other application, please try to uninstall AutoProfiles, and install it after the conflicted application is installed.

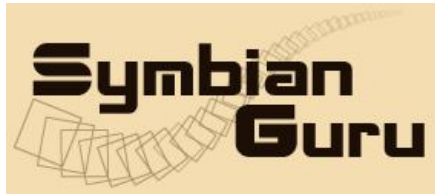
General information

AutoProfiles is meant to switch automatically (scheduler based) profiles according to one's schedule or calendar. It allows to set a Profile on definite time and day of the week or recurring on the particular date and time and synchronize Profile change with one's Calendar.

The application is fully customizable according to the users needs. There are following options available in the main screen that has to be adjusted:

Activate/Deactivate Function





SymbianGuru.com Your guru in mobile software.

www.symbianguru.com

support@symbianguru.com

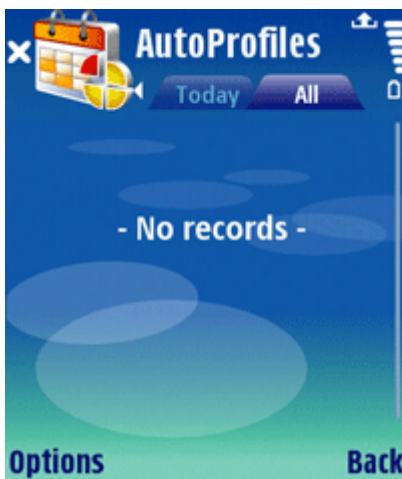
To Activate or Deactivate the application one has just to click the Activate button and choose the appropriate condition. The application will be activated (turned on) or deactivated (turned off).

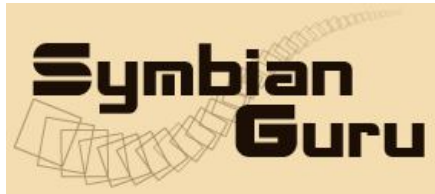
Schedule

Using Schedule item you can set up, view and edit profiles schedule according to your wishes.

If there are no records, a “No records” text appears on the screen.

For user’s convenience there exist two tabs – **Today** and **All**, with the help of which there will be a possibility for user by choosing tab Today to look through all “Today’s” records, but only those, which are not yet processed; tab All shows the whole list of schedules. “Today” means records that apply to today.





SymbianGuru.com Your guru in mobile software.

www.symbianguru.com

support@symbianguru.com

New Schedule

To create a new schedule record you have to click left soft key menu and fill in the following fields:



1. Profile (please choose here profile you are making schedule for)

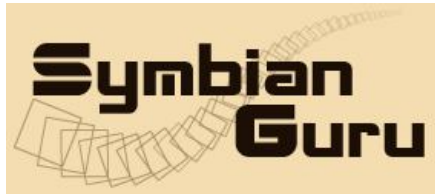
Attention! If you create a new custom profile in Settings – Profiles of your phone you will have to turn off the AutoProfiles and restart the application in order to update the profiles list.

The changed names of the built-in profiles will not be changed in AutoProfiles application.

2. Condition (select how often your new schedule will be executed)

The program supports 7 conditions:

- Once: The schedule activates at a specified date and time. The record is then deleted from Today tab.
- Workdays: The schedule activates every working day at the specified time.
- Non-working days: The schedule activates every weekend at the specified time.
- Daily: The schedule activates at a specified time every day.
- Weekly: The schedule activates at a specified time on the same day every week.



SymbianGuru.com Your guru in mobile software.

www.symbianguru.com

support@symbianguru.com

- Monthly: The schedule activates at a specified time on the same day every month.
 - Yearly: The alarm activates at a specified time on the same day every year.
3. Date (select when the schedule should be activated, in case of condition <once> point the date of profile schedule activation)
 4. Activation time (choose the time of profile schedule activation)
 5. Set deactivation (choose whether to deactivate the current profile schedule or not)
 6. Deactivation time (choose the time of profile schedule deactivation)
 7. Bluetooth (choose the Bluetooth status on the profile change)
 - a. Don't change (the current Bluetooth status is not changed on profile switching)
 - b. On, hidden (visible only to the devices previously paired with)
 - c. On, visible to all (visible to all devices who search for Bluetooth)
 - d. Off (when the profile changes, Bluetooth is turned off)

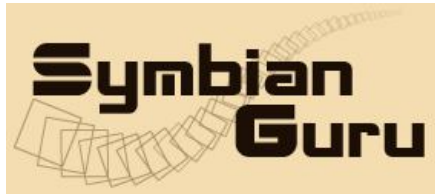
It is possible to switch automatically to Offline and from Offline profile (even when Offline profile is on, the profile scheduling will be executed).

Note! After deactivation the current profile changes back to the previous.

If there are already existing records, the screen has the following view:



The list of records has the following format: <Activation time><Date> - <Condition>.



SymbianGuru.com Your guru in mobile software.

www.symbianguru.com

support@symbianguru.com

Choosing the left soft key of the Schedule screen user can perform following actions:

- View details (Today screen)
- Activate/Deactivate
- New
- Edit
- Delete
- Settings
- Help
- About
- Exit

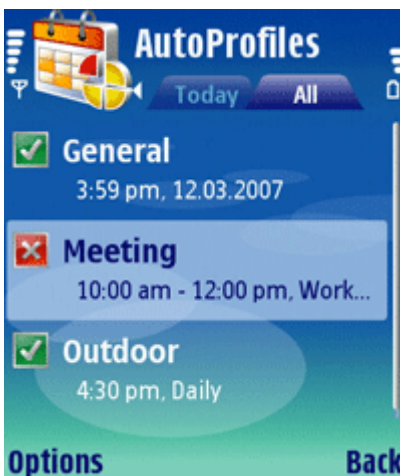
View details

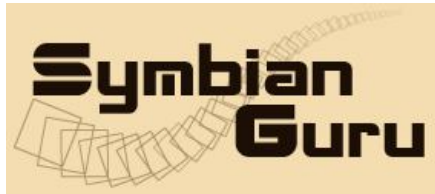
You can view details of schedule records in Today Screen by clicking on the schedule item in the list and choosing the “View details” item in the left soft key menu.

Here you can view the following details of a current record:

- Profile
- Condition
- Date
- Activation time
- Set deactivation
- Deactivation time
- Bluetooth

Deactivate





SymbianGuru.com Your guru in mobile software.

www.symbianguru.com

support@symbianguru.com

This option turns off the current record, but you can turn it on again going to menu Options → Activate.

Note! It not possible to set the deactivation time to next day (it is restriction of Symbian phones). So if you would like a profile to be set in the evening, and set off next day in the morning, please make two schedules.

Edit

Here you can change already existing fields in the schedule records.

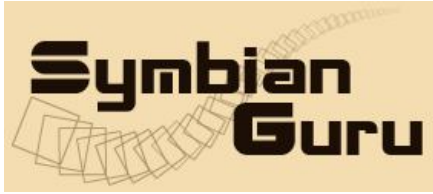
Calendar



Calendar is convenient for setting profiles schedule that will be dependent on one's mobile phone calendar meetings. If user has a meeting defined in calendar, a chosen profile will be applied for the time of the meeting automatically.

To set a calendar rule you can click the Calendar button on the main screen and fill in such fields as:

- Active on meeting (it means that the condition of the profile will be changed to the selected one if there is a Meeting entry in a mobile phone calendar). There are 3 conditions of this item:
 - ✓ Always (it means that the condition of the profile will be always changed to the selected one if there is a Meeting entry in a mobile phone calendar)
 - ✓ On :AP: command (it means that the condition of the profile will be changed to the selected one only if value like “:AP:” or “:ap:” or “:Ap:” is present in a Meeting entry description in a mobile phone calendar)



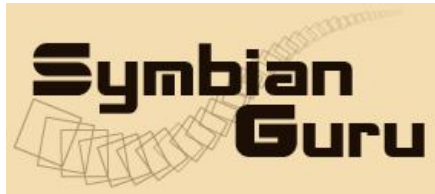
SymbianGuru.com Your guru in mobile software.

www.symbianguru.com

support@symbianguru.com

- ✓ Never (it means that the condition of the profile will not be changed in case of there is Meeting entry in a mobile phone calendar)
- Profile (choose one profile from the list of profiles given; this profile will be activated when Active on Meeting is “Always” or “On :AP: command”, and there is a Meeting entry in a mobile phone calendar)

Attention!!! If there are overlapping events from the profiles schedule and from the calendar, then calendar event has more priority.



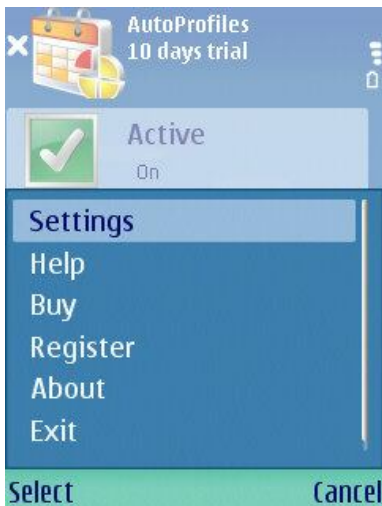
SymbianGuru.com Your guru in mobile software.

www.symbianguru.com

support@symbianguru.com

AutoProfiles Options

User can access Options of AutoProfiles with one click on the Options button.



Settings – allows to modify such fields of the application as On boot start with and Workdays

Help – contains all necessary information for navigation across the application

Register - field for entering Registration Code

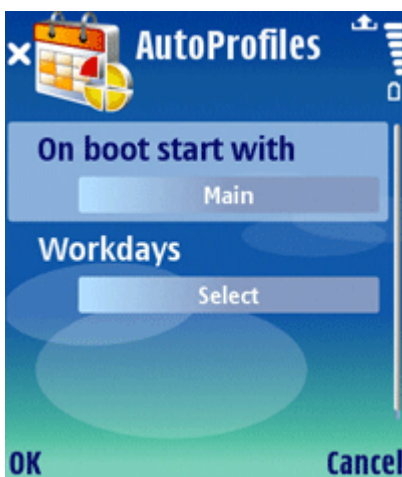
Buy – allows buying the AutoProfiles application

About – contains brief information about the developer

Exit – exits the application

AutoProfiles Settings

You can access Settings of AutoProfiles with one click on the Settings button in the Button Bar.



- On boot start with (choosing the initial view of the application after mobile restart, among which are Main, Today, All)



SymbianGuru.com Your guru in mobile software.

www.symbianguru.com

support@symbianguru.com

- Workdays (to define work days for workday alarms by ticking the needed days of the week; the default work days in the check-box are Monday, Tuesday, Wednesday, Thursday and Friday, which you can change up to your wishes)

How to uninstall AutoProfiles v 3.2

In order to uninstall AutoProfiles, please go to the Menu → System → Applications Manager, choose the AutoProfiles Application from the list and uninstall it in the usual way.

AutoProfiles Support

If you have any questions or concerns regarding the programm, please contact us at support@symbianguru.com. Our experienced specialists are always ready to help you.